

SIXTH BIENNIAL REPORT

OF THE

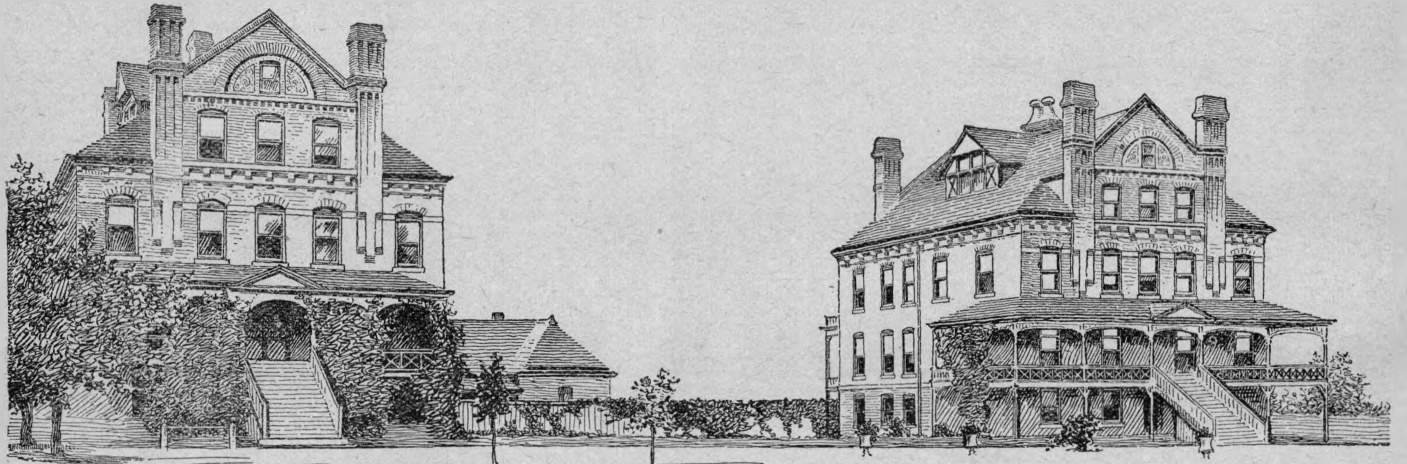
Nebraska Industrial Home

AT

MILFORD, NEBRASKA.

FOR THE TWO YEARS ENDING NOVEMBER 30, 1900.

LINCOLN, NEB.:
STATE JOURNAL COMPANY, PRINTERS.
1901.



NEBRASKA INDUSTRIAL HOME

To His Excellency, Governor W. A. Poynter, and to the Honorable Board of Public Lands and Buildings:

The time has arrived for the sixth biennial report of the Nebraska Industrial Home, which you will kindly allow me to submit for your consideration. It will be impossible in this brief report to make plain the advancement in our work, or our needs for the coming biennium. I trust you will appreciate our efforts to make the most of what we have had. I am.

Very respectfully yours,

AMANDA M. EDWARDS.

ADVISORY BOARD.

Mrs. M. D. Welsh, President.....Lincoln
Mrs. Lola Vincent, Vice President.....Omaha
Mrs. E. A. Gilbert, SecretaryYork

APPLICATION COMMITTEE.

Mrs. O. N. HumphreyLincoln
Mrs. Thos. GrahamSeward
Mrs. M. D. WelshLincoln

OFFICERS OF THE INSTITUTION.

Amanda M. EdwardsSuperintendent
Alma L. RowePhysician
Miss Mellie ReedMatron

EMPLOYEES.

Miss Cora DavidsonTeacher
Miss Ida H. McInteeSewing Teacher
Jesse KentEngineer
Theo. KahlerFarmer

REPORT.

REPORT OF THE ADVISORY BOARD.

To His Excellency, Governor W. A. Poynter, and to the Honorable Board of Public Lands and Buildings:

The advisory board beg to submit the following:

Meetings have been held as the statutes of Nebraska direct. Harmony has prevailed at all times, and we unanimously commend the wise and helpful management of the Superintendent, Mrs. Edwards. We have found her at all times seeking to uplift those placed in her charge. She has been kind and sympathetic, without being lax in discipline.

The industrial features have been peculiarly gratifying. The training received here has turned many a young woman into useful paths.

We especially commend the judicious use of the small amount of funds placed at Mrs. Edwards' disposal. The land has been cultivated and been made to yield bountifully. The table has been uniformly good, and much has been supplied from the gardens.

A competent corps of officers and employees have helped to maintain the standard of the Home.

As a board, we unanimously recommend the appropriation of funds sufficient to make much needed repairs. The buildings must rapidly deteriorate unless such funds are forthcoming.

We beg to call your attention to the fact that no deficiency has been brought under the present management.

Respectfully submitted,

ELIZABETH C. WELSH.
ABBIE HUMPHREY.
LOUISA GILBERT.
JANET GRAHAM.
LOLA VINCENT.

GENERAL INFORMATION.

The magnitude of the work of this institution is not generally understood. Penitent dependent girls, from any part of the state, who have no one to care for them, are brought under home influences and home training. The educational advantages and practical instruction render it possible for all who will to fit themselves for positions of self-support, and usefulness. Most of them prove their gratitude for the mental, moral, and physical training they have received, by going out into good homes as faithful, respected helpers. By placing the babes in good homes useful citizens are produced. Could a grander work be done than to help those who have no one to care for them, to arouse them to their best efforts, and to save the innocent ones from the dangers of pauperism and crime?

DISCIPLINE.

As loyal obedience is always based upon self-respect, the kind, loving, strict discipline of the Home must call for that obedience which engenders self-respect, and causes each one to guard well their thoughts and acts.

A very wayward inmate remarked that she did not realize how bad she was until she came into the Home atmosphere and saw her life in the light of truth. We demerit all contention, gossip, slang, and everything that would mar the happiness of the Home. Each inmate is made to feel that she is a part of the Home, and that as the happiness of a household may be marred by one disobedient member, so our home may suffer from any careless, selfish act on her part. The thoughtful loving obedience manifested is wonderful when we remember that many of our grls have never known discipline until they came here.

INDUSTRIAL DEPARTMENT.

Domestic.

Household economics are practically and systematically taught every day. There is a great demand for good, well-trained domestics. Every inmate is required to take six weeks

training in each of the following departments: Laundry, washing and ironing; cooking, plain, cooking pastry; dining-room; dormitory and general management. Each one taking full charge as head girl for one week in the various departments, passing from one department to another as in school work. Many of our girls are getting extra wages on account of their efficiency as housekeepers.

Educational.

Our home should be placed among the educational institutions of the state. We emphasize the value of practical education, combined with Christian principles. All who are able are expected to attend school in the afternoon of every week day, and Sunday school on the Sabbath. We have had some inmates who could neither read nor write in English, some who have finished the eighth grade, and a few graduates of high schools, proving that where the intellect had been cultivated by our free school system, the every-day moral discipline had been lacking. Our every evening chapel exercises of prayer and song and Bible study are enjoyed by all, and seem conducive of much good. Much valuable information is obtained during the year by reading aloud to the inmates at each meal time, one of the officers or employees conducting the reading.

Sewing and Dressmaking.

The aim in this very important department is not only to teach plain sewing, making over, mending and the care of their clothing, but also to cut and make their own dresses. Some have learned to cut by chart expecting to make a livelihood by sewing.

REPAIRS AND IMPROVEMENTS.

In order to keep up the repairs of our large buildings and many outbuildings it is necessary to drive a nail here and drive a nail there almost daily. We have expended the money given us where most needed. We have moved the partitions in the barn, with no expense, except material for brace, and now have

room for all the stock, hay, and vehicles. We have built a much needed cave cellar, which enables us to keep the many vegetables we raise in good condition. We have done all the laying of new floors, calcimining, painting, and papering the appropriation would seem to allow. In looking over repairs and improvements the fences have not been forgotten. There are many repairs and some improvements which could be profitably made.

RECOMMENDATIONS.

Having had no nurse or assistant nurse during the last four years, and having to bestow almost daily care upon the mothers and infants in the hospital ward, I realize the necessity of having that department filled, and would recommend an appropriation for such helpers.

Our engine house has been in a tumble-down condition for some years and is, according to the statutes, too near the main building. As the boilers should be reset, I would suggest that the brick of the engine house could be profitably used in a building at a suitable distance from the rest of the institution.

As the farmer is farmer, gardener, and coachman and has to work from twelve to sixteen hours per day, I would recommend that he receive at least \$40 per month.

ACKNOWLEDGMENTS.

We greatly appreciate the interest the Governor has taken in the welfare of this institution; the watchful care of accounts taken by the Board of Public Lands and Buildings; the kind, helpful spirit of the advisory board, and the kindness of all who have sought to be kind. Letters of cheer, and visits from kind friends, who are interested in the work of the Home, have been the cause of much gratitude. We are grateful to the pastors of Milford who have preached to us and helped us in the chapel and Sunday school work, and to the station agent, editor, and business men of our town for kind favors shown.

I want to thank my helpers who by their faithful, harmonious work have helped to advance and maintain the institution in its present advanced condition.

The present salary of each officer is as follows:

	Per Annum.
Superintendent	\$800 00
Physician	700 00
Matron	500 00

EMPLOYEES.

Sewing teacher	250 00
Teacher	300 00
Farmer	360 00
Engineer	600 00

TABULATED STATEMENT.

Number adults in Home, December 1, 1898.....	29
Number admitted, December 1, 1898, to December 1, 1900,	63
Number American parentage	54
Number foreign parentage	38
Average age	19.32
Number parents dead	21
Number father, only, living	18
Number mother, only, living	12
Number returned to friends	33
Number married	10
Number transferred to other institutions	4
Number placed in homes to work	16
Number adults cared for each year	46
Number in Home, December 1, 1900	29
Number children in Home, December 1, 1898.....	25
Number born, December 1, 1892, to December 1, 1900....	56
Number brought by mothers	1
Number transferred to Home for the Friendless	9
Number died	8

Number stillborn	1
Number taken by mothers	31
Number children adopted	14
Number children in Home, December 1, 1900	20
Number children cared for each year.....	41
Number children and adults in Home, December 1, 1900..	49
Total, children and adults, cared for each year	87
Average daily attendance, adults and children	55

PER CAPITA COST OF MAINTENANCE.

The per capita cost of maintenance, based on the average weekly attendance (55), and computed upon the entire expenditures from December 1, 1898, to December 1, 1900, is \$3.33 per week. The per capita, based on the average weekly attendance (55), and computed upon the amount expended from funds for board and clothing, is 91 cents per week.

COMMITTED BY COUNTIES.

County.	Previous.	Past 2 yrs.	Total.
Adams	2	3	5
Antelope	2	0	2
Boone	1	0	1
Boxbutte	1	1	2
Brown	1	0	1
Buffalo	15	0	15
Burt	7	1	8
Butler	11	1	12
Cass	7	0	7
Cedar	1	0	1
Chase	1	0	1
Cherry	1	0	1
Clay	7	2	9
Colfax	2	0	2
Cuming	1	0	1
Custer	3	0	3

County.	Previous.	Past 2 yrs.	Total.
Dawes	2	0	2
Dawson	5	1	6
Dixon	1	1	2
Dodge	13	2	15
Douglas	71	1	72
Fillmore	14	5	19
Franklin	7	1	8
Frontier	1	0	1
Furnas	2	0	2
Gage	9	0	9
Gosper	1	1	2
Greeley	1	0	1
Hall	14	3	17
Hamilton	4	3	7
Harlan	5	0	5
Hayes	1	0	1
Holt	1	0	1
Howard	3	1	4
Jefferson	3	2	5
Johnson	2	1	3
Kearney	2	1	3
Knox	1	0	1
Lancaster	58	6	64
Lincoln	4	0	4
Madison	10	1	11
Merrick	4	1	5
Nance	2	2	4
Nemaha	6	0	6
Nuckolls	4	0	4
Otoe	9	0	9
Pawnee	4	1	5
Phelps	3	1	4
Pierce	1	0	1
Platte	9	3	12
Polk	8	2	10
Red Willow	4	3	7

County.	Previous.	Past 2 yrs.	Total.
Richardson	6	0	6
Saline	12	2	14
Sarpy	1	0	1
Saunders	10	2	12
Seward	9	2	11
Sherman	1	0	1
Sheridan	2	0	2
Stanton	1	0	1
Sioux	1	0	1
Thayer	4	2	6
Valley	0	1	1
Washington	2	0	2
Wayne	3	0	3
Webster	5	1	6
York	6	0	6
Total	416	62	478

WORK DONE IN INDUSTRIAL ROOMS.

Aprons	166
Bags, ham	20
Bands, hospital ward	48
Bread covers	34
Bed pads	25
Button holes	4,407
Carpets sewed	12
Cloaks, baby	17
Corset covers	23
Curtains, lace, hemmed, pairs	10
Curtains, sash, hemmed	19
Drawers, pairs	126
Dresses, adults	218
Dresses, baby	285
Diapers	1,058

Hose, pairs	126
Hoods, baby	17
Initial letters, embroidered	3,720
Napkins, hemmed	94
Night dresses, adults	158
Night dresses, baby.....	195
Pillow cases, pairs	160
Pillow cases, nursery, pairs	72
Quilts, baby	127
Rugs, hemmed	48
Sheets	235
Sheets, nursery	36
Shirts, baby	187
Skirts, adults	73
Skirts, baby	189
Shirt waists	60
Sun bonnets	24
Towels, hemmed	191
Table cloths, hemmed	12
Various small articles	891
Number articles repaired	2,026
Number of pieces washed	87,872

TIME TABLE.

	A. M.
Rising bell	6:00
Breakfast bell	7:00
At work in all departments	7:30
Dinner	12:00
	P. M.
At work in all departments	1:00
School	2:30
Recreation	5:00
Supper	5:30
Chapel	7:30
Retiring	9:00

PRODUCT OF OUTDOOR LABOR.

	Produced.	Value.
Apples, bushels	108	\$54 00
Asparagus, bunches	126	6 30
Beans, green, bushels	50	30 00
Beets, bushels	20	8 00
Butter, pounds	36	5 40
Cabbage, pounds	372	7 44
Cantaloupes, dozen	9	10 80
Chickens, hatched, dozen	9 $\frac{1}{2}$	28 00
Corn, sweet, bushels	100	20 00
Corn, field, bushels	150	50 00
Corn, cut, acres	2	20 00
Cucumbers, bushels	15	15 00
Eggs, hen, dozen	250	42 50
Eggs, turkey, dozen	18	3 60
Hams, pounds	374	33 66
Hay, clover, tons	48	288 00
Hay, wild, tons	10	50 00
Lard, pounds	235	28 20
Lettuce, bushels	45	54 00
Milk, quarts	15,925	796 25
Onions, bunches	700	35 00
Pie plant, pounds	83	4 15
Pork, pounds	505	40 40
Potatoes, sweet, bushels	4	7 60
Potatoes, Irish, bushels.....	879	439 50
Radishes, bunches	500	25 00
Shoulders, pounds	170	25 00
Sausage, pounds	184	18 40
Seed, clover, bushels	5	25 25
Tomatoes, bushels	25	10 00
Turkeys, killed, pounds	294	26 75
Turkeys, hatched, dozen	9	63 00
Ducks, dozen	1	8 40
Total value		\$2,279 60

CANNED FRUITS, JELLIES, ETC.

Canned fruits, quarts	146
Jellies, glasses	120
Pickles, preserves, etc., quarts	127

SUMMARY OF INVENTORY.

Land	\$2,400 00
North wing	14,000 00
South wing	14,000 00
Cottage	500 00
Barn	800 00
Improvements	1,500 00
Laundry	1,400 00
Engine house and machinery	3,400 00
Horses, cows, hogs, and poultry	530 00
Carriages, wagon and harness	200 00
Farm and repair tools	75 00
Furniture	2,000 00
Library and school books	40 00
Clothing and dry goods	100 00
Provisions	100 00
Fuel	50 00
Miscellaneous	100 00
Total.....	\$41,195 00

EXPENDITURES IN EACH APPROPRIATION.

From December 1, 1898, to June 1, 1899.

Officers' salaries	\$1,250 04
Employees' wages	713 16
Board and clothing	1,617 25
Burial expense, incidentals, and amusements	43 02
Drugs, paints, oils, and instruments	70 97
Fuel and light	1,188 27

Feed for stock	98 15
Live stock and conveyances	
New engine and improvements	263 55
Official expense	58 44
Repairs	
Stationery, postage, and telephone	92 20
Traveling expense	17 00
Water supply and fire protection	402 75
Total.....	<u>\$5,814 80</u>

From June 1, 1899, to December 1, 1899.

Officers' salaries	\$1,000 03
Employees' wages	823 14
Board and clothing	732 72
Burial expense, incidentals, and amusements	16 92
Drugs, paints, oils, and instruments	150 40
Feed for stock	156 12
Fuel and light	263 89
Live stock and conveyances	5 00
New engine and improvements	113 60
Official expense	63 83
Repairs	66 47
Stationery, postage, and telephone	125 93
Traveling expense	109 43
Water supply and fire protection	
Total.....	<u>\$3,627 48</u>

From December 1, 1899, to June 1, 1900.

Officers' salaries	\$999 99
Employees' wages	755 00
Board and clothing	1,514 24
Burial expense, incidentals, and amusements	26 00
Drugs, paints, oils, and instruments.....	59 75
Feed for stock	159 56
Fuel and lights	1,204 69
Live stock and conveyances	3 50
New engine and improvements.....	121 26

Official expense	52 77
Repairs	46 85
Stationery, postage, and telephone	137 00
Traveling expense	74 26
Water supply and fire protection	
Total.....	<u>\$5,154 87</u>

From June 1, 1900, to December 1, 1900.

Officers' salaries	\$999 97
Employees' wages	755 00
Board and clothing	1,349 66
Burial expense, incidentals, and amusements	73 83
Drugs, paints, oils, and instruments	92 20
Feed for stock	115 46
Fuel and lights	561 58
Live stock and conveyances	150 00
New engine and improvements	133 07
Official expense	46 98
Repairs	85 35
Stationery, postage, and telephone	82 55
Traveling expense	15 85
Water supply and fire protection	13 50
Total.....	<u>\$4,475 00</u>
Total expenditures.....	<u>\$19,072 15</u>

APPROPRIATIONS AND DISBURSEMENTS.

	Appropriation 1897.	Appropriation 1899.	Disbursements.
Officers' salaries	\$1,005 47	\$4,000 00	\$4,250 03
Employees' wages	714 85	3,020 00	3,046 30
Board and clothing.....	1,230 40	5,500 00	5,213 87
Burial expense, incidentals, and amusements	130 73	150 00	159 77
Drugs, paints, oils, and inst.,	151 40	400 00	373 32

	Appropriation 1897.	Appropriation 1899.	Disbursement.
Feed for stock		600 00	529 29
Fuel and light	900 19	3,000 00	3,218 43
Live stock and conveyances,		400 00	158 50
New engine and improve- ments		750 00	367 93
Official expense	52 21	200 00	222 02
Repairs	152 62	500 00	462 22
Stationary, postage, and telephone	105 82	400 00	437 68
Traveling expense	17 19	200 00	216 54
Water supply and fire pro- tection	401 66	200 00	416 25
Totals.....	\$4,868 54	\$19,320 00	\$19,072 15
Total appropriations			\$24,188 54
Total disbursements			19,072 15
			<u>\$5,116 39</u>
Lapsed from 1897 appropriation			369 54
Balance December 1, 1900.....			<u>\$4,746 65</u>

ESTIMATE OF APPROPRIATIONS REQUIRED FROM
MARCH 31, 1901, TO MARCH 31, 1903.

Salary of superintendent	\$3,000 00
Salary of physician	1,800 00
Salary of matron	1,200 00
Salary of teacher	600 00
Salary of engineer	1,800 00
Salary of farmer	1,200 00
Salary of sewing teacher	600 00
Salary of nurse	600 00
Salary of assistant nurse	600 00
Salary of bookkeeper	600 00

Board and clothing	5,700 00
Burial expense	100 00
Drugs, paints, oils, and instruments.....	400 00
Feed for stock	600 00
Fuel and lights	3,000 00
Incidentals and amusements	200 00
Live stock and conveyances	400 00
Official expense	200 00
Repairs	500 00
Stationary, postage, and telephone	400 00
Traveling expense	400 00
Water supply, fire protection, and necessary expenses not otherwise provided for	500 00
Moving boiler house, setting boilers, etc.....	5,000 00
Improvements	750 00
Total	<u>\$31,150 00</u>